

Key to SR162 South Sheets

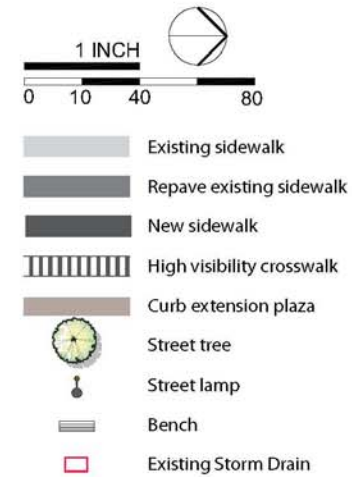
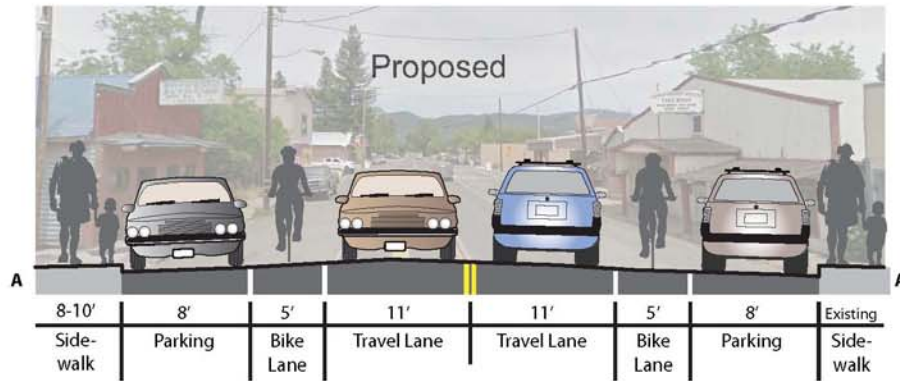
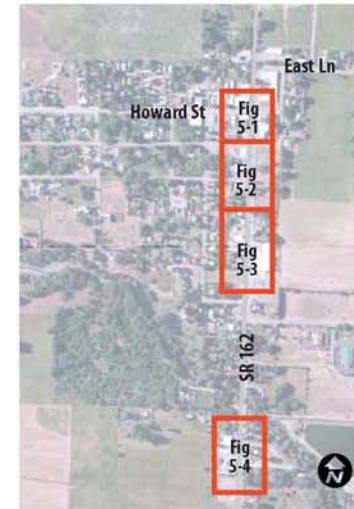


Figure 5-1: SR 162 / Howard Street Intersection

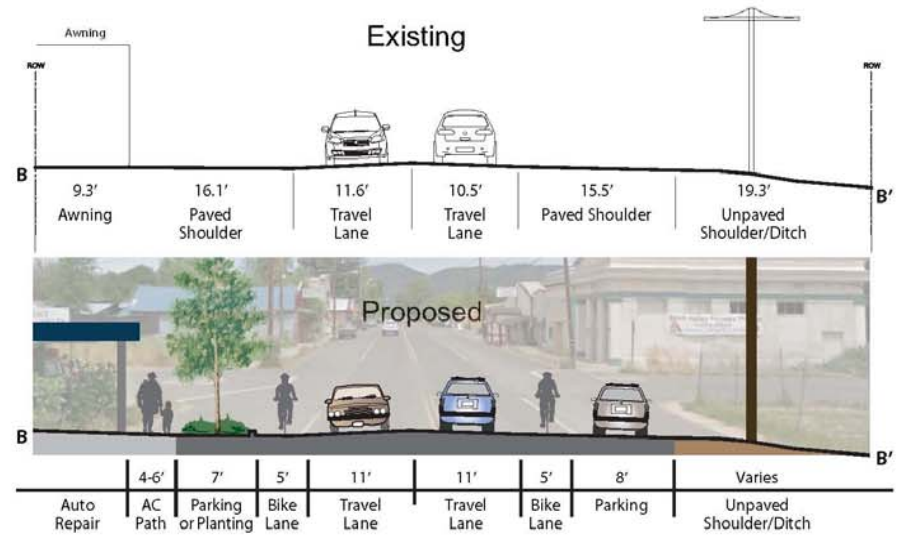
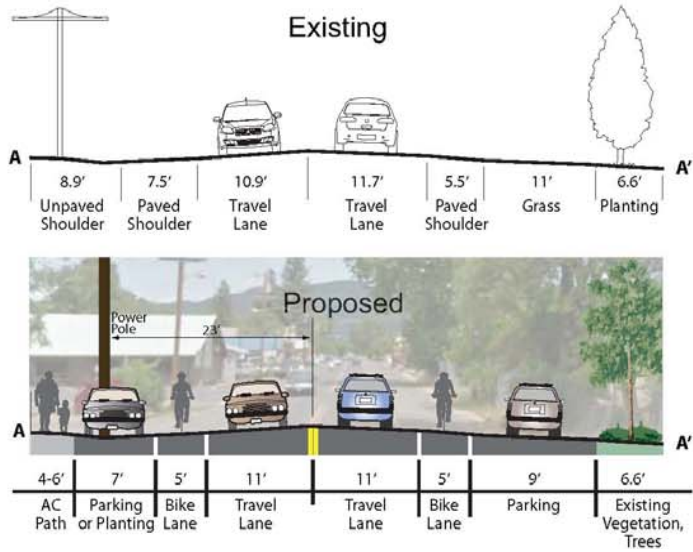
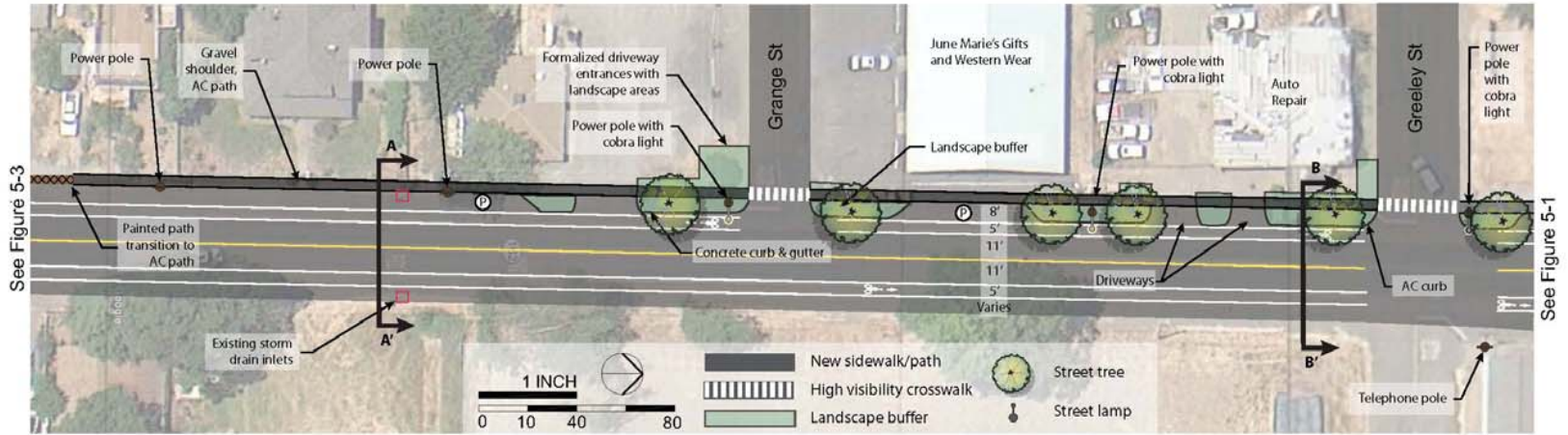
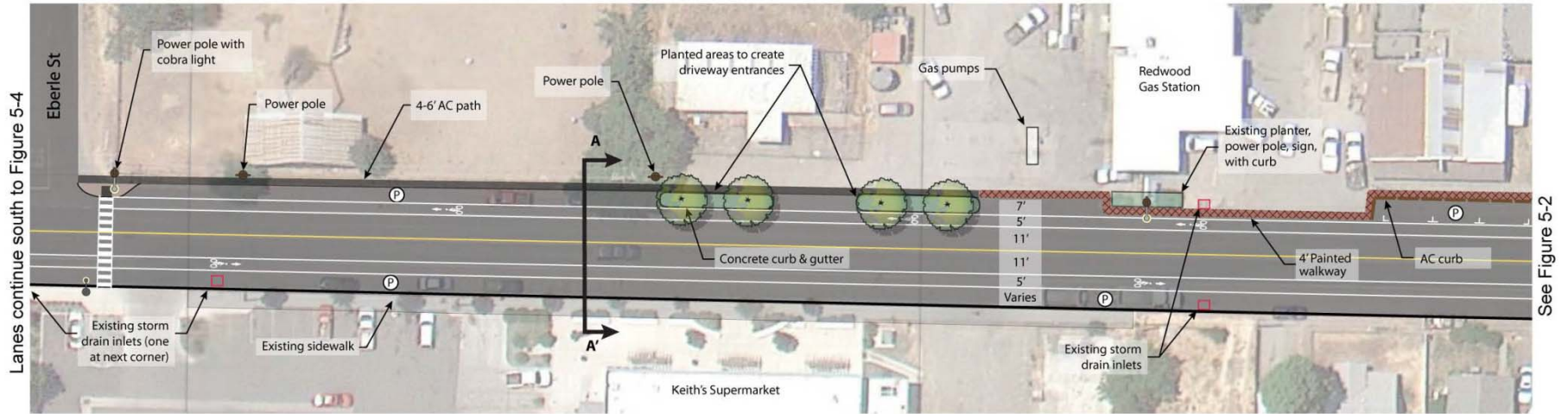


Figure 5-2: SR 162 - Greeley and Grange Streets



Lanes continue south to Figure 5-4

See Figure 5-2

Key to SR162 South Sheets

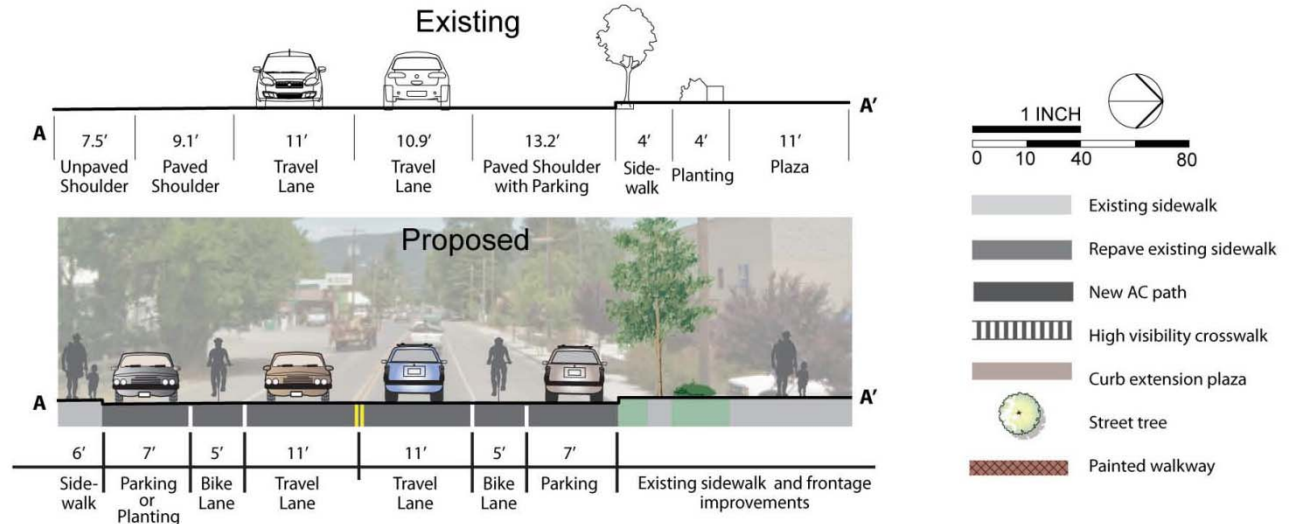
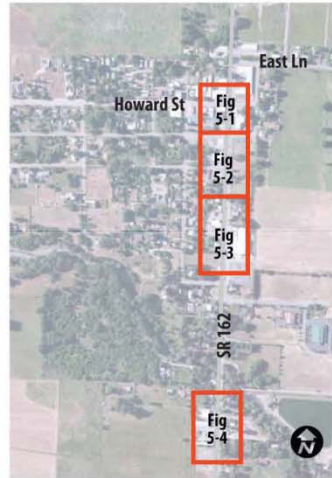


Figure 5-3: SR 162 – Redwood Market to Eberle Street



Lanes continue north to Figure 5-2

Key to SR162 South Sheets

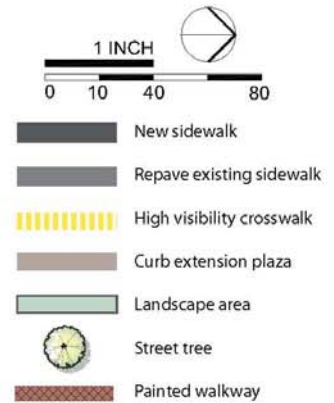
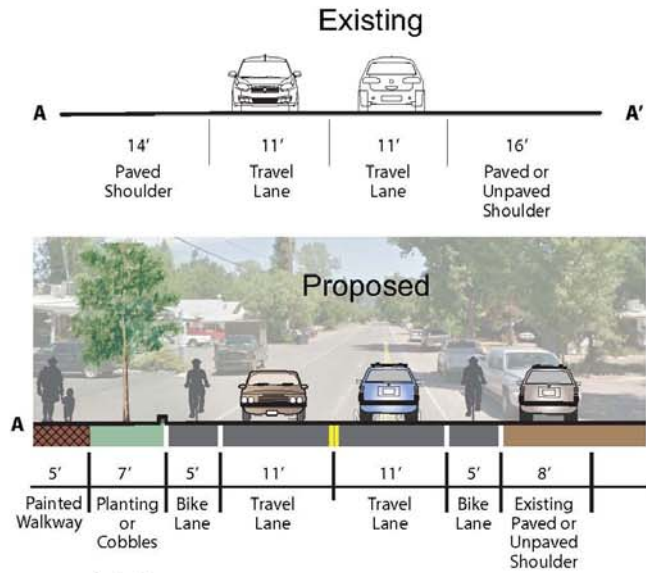
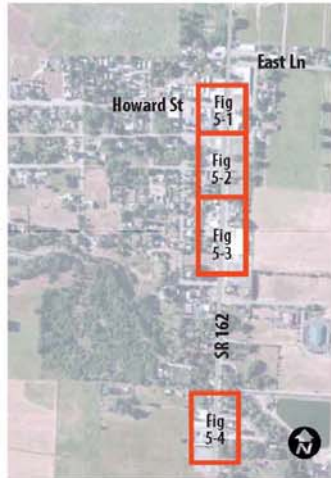
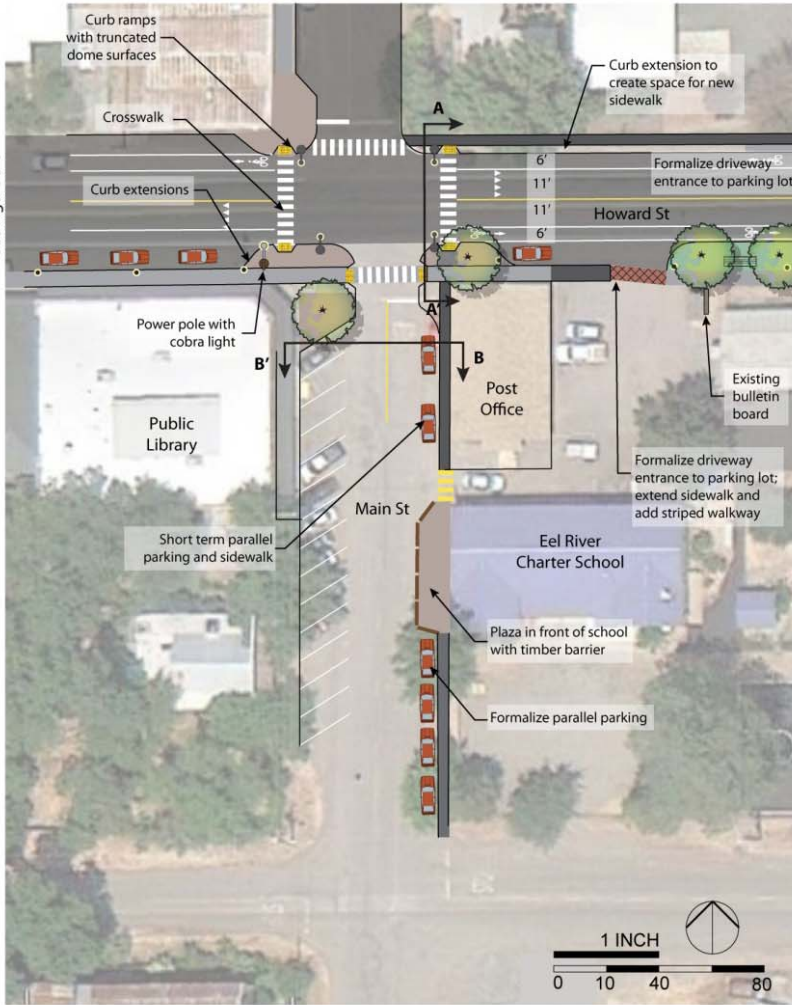
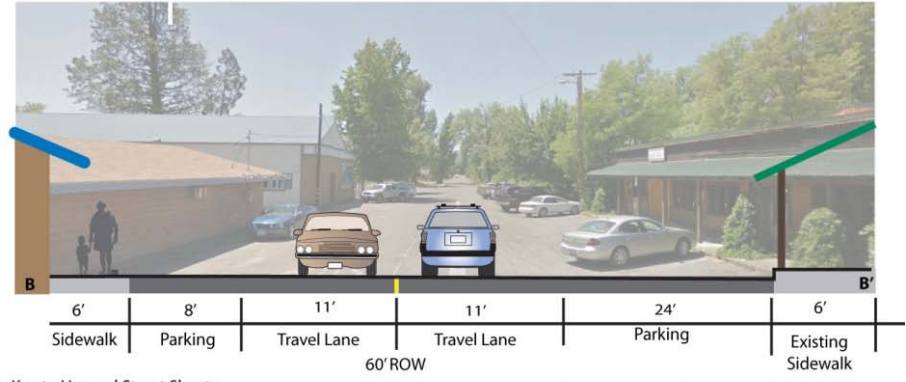
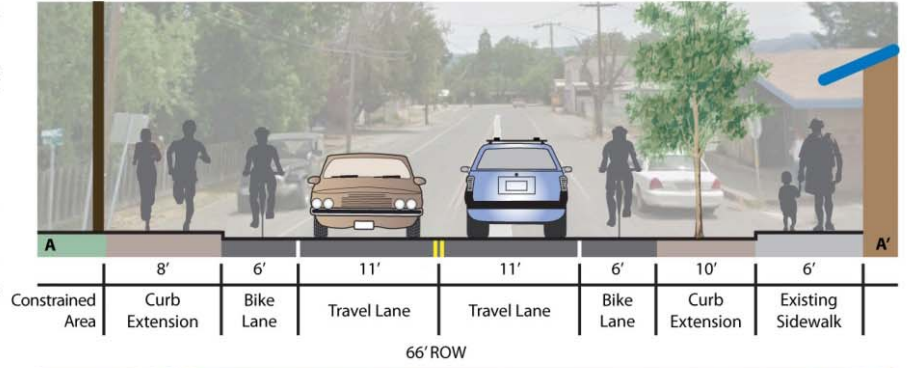


Figure 5-4: SR 162 - South

See Figure 5-6



Design continues east to SR162 (Figure 5-1)



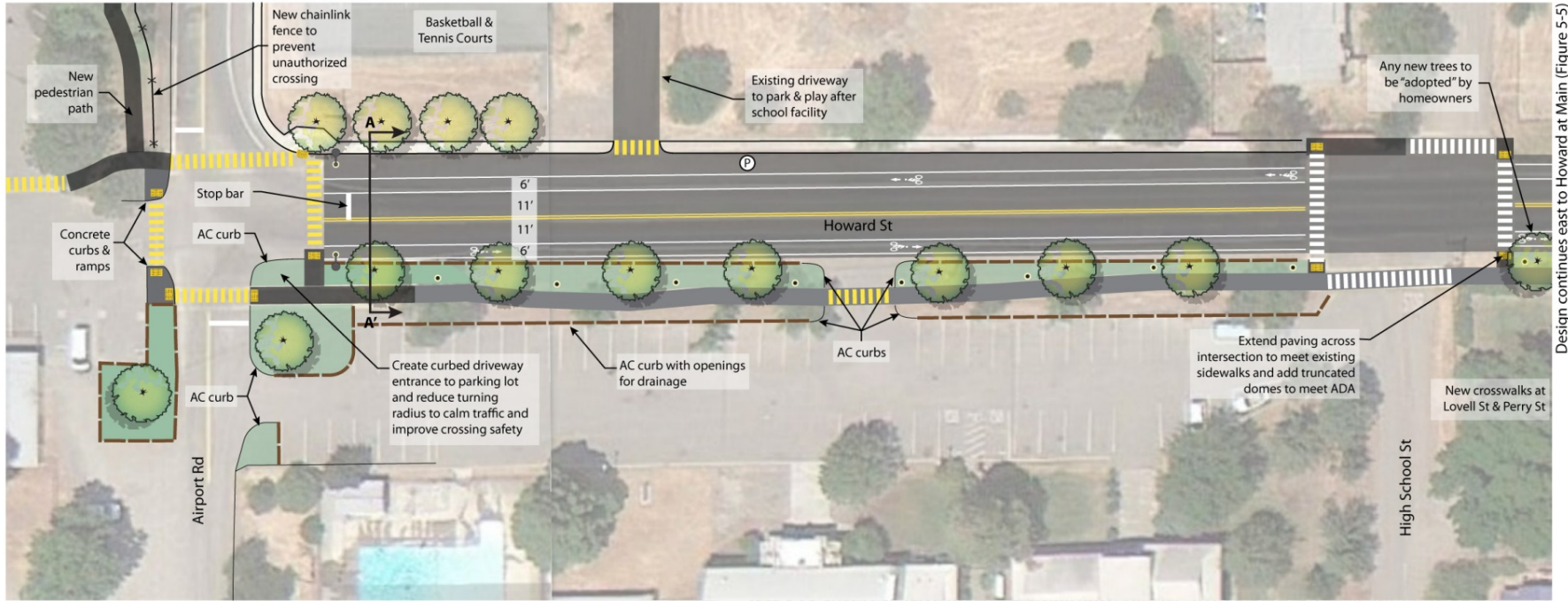
Key to Howard Street Sheets



- New sidewalk
- Repave existing path/sidewalk
- High visibility crosswalk
- Planting area
- Street tree
- Pedestrian-level lighting
- Street lamp
- Painted walkway

Figure 5-5: Howard Street at Main Street

Design continues north to Foothill (Figure 5-7)



Design continues east to Howard at Main (Figure 5-5)

Key to Howard Street Sheets

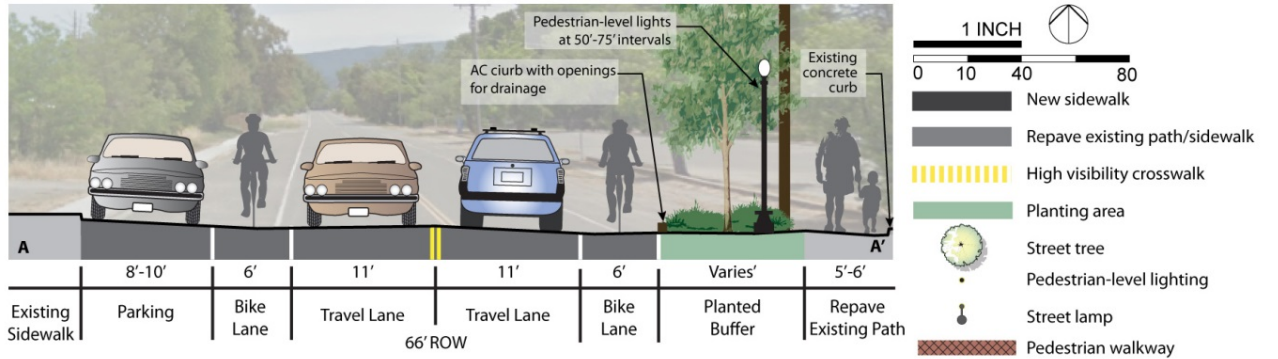
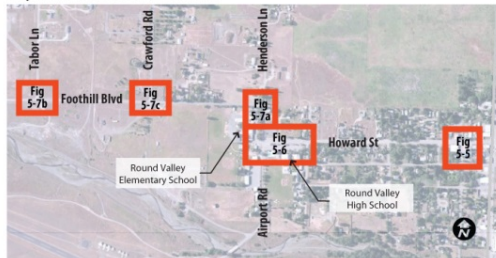


Figure 5-6: Howard Street at Airport Road

Figure 5-7a: Foothill at Airport Road

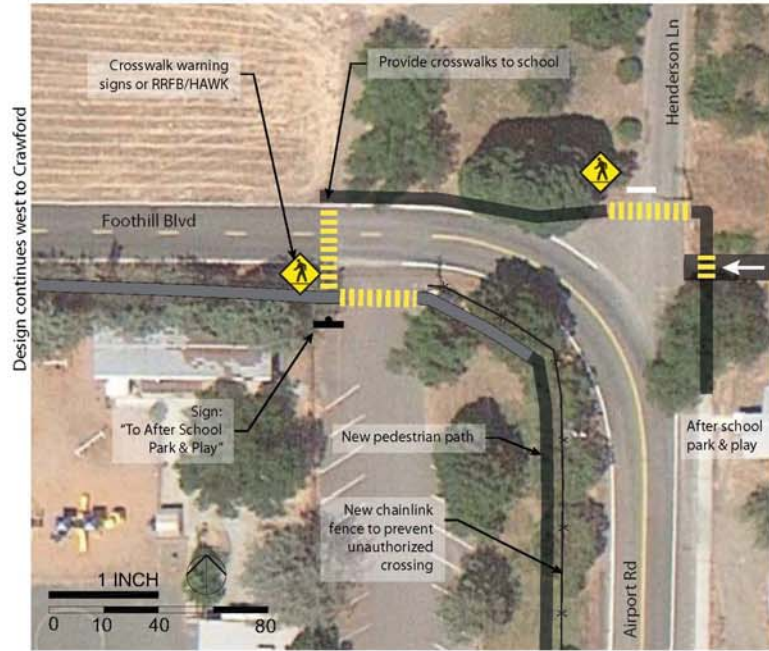


Figure 5-7b: Foothill at Tabor



Figure 5-7c: Foothill at Crawford



- New sidewalk
- Repave existing sidewalk
- High visibility crosswalk
- Pedestrian-level lighting
- Street lamp

Key to Howard Street Sheets



Foothill (Existing, typ.)

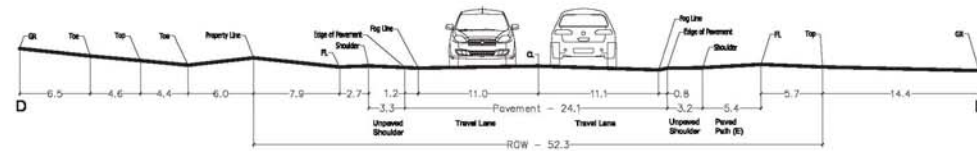
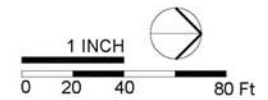
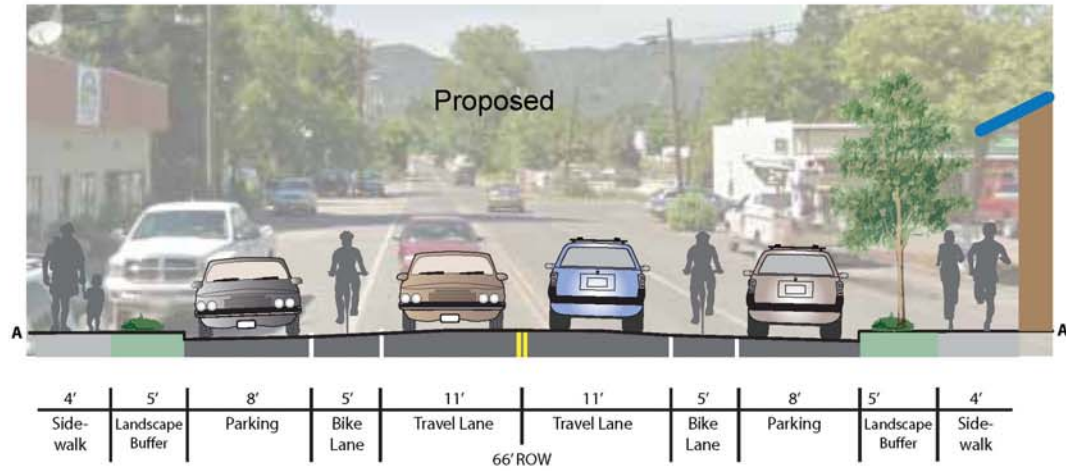


Figure 5-7: Foothill Boulevard



- Improved Sidewalk
- Existing Roadway
- High Visibility Crosswalk
- Curb Extension Plaza
- Street Tree
- Street Lamp
- Bench

Figure 5-8: SR 162 – Howard Intersection to East Lane

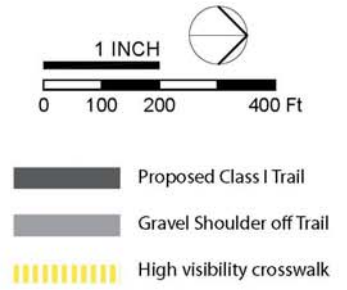
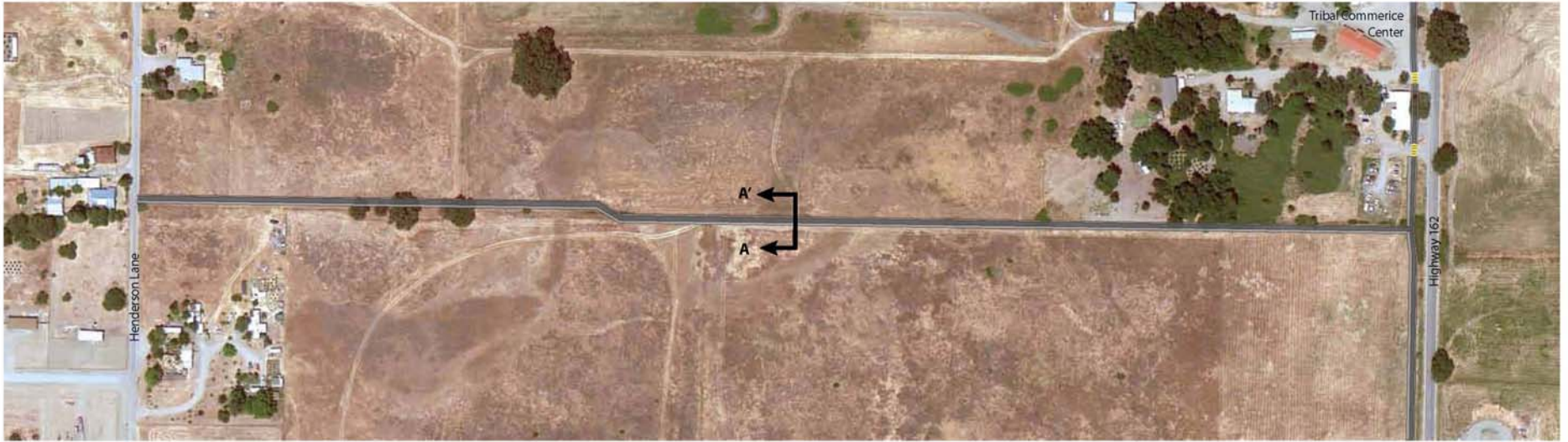


Figure 5-9: East-West Trail – SR 162 to Henderson

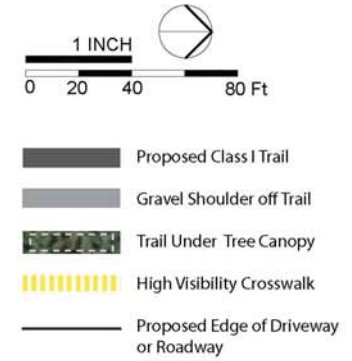
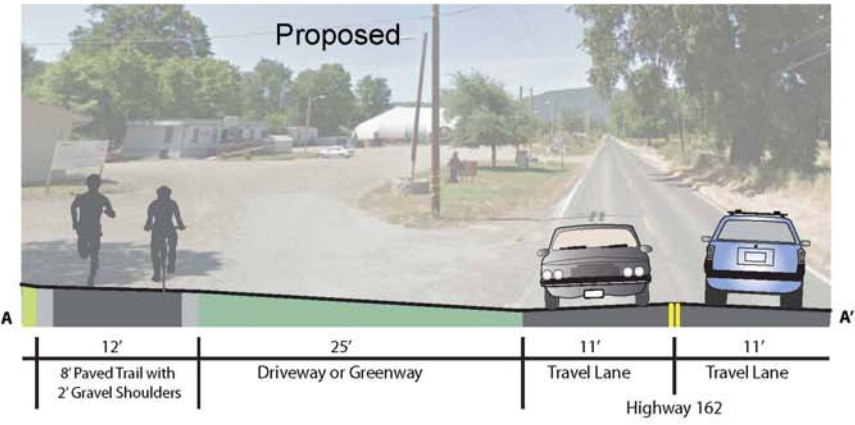
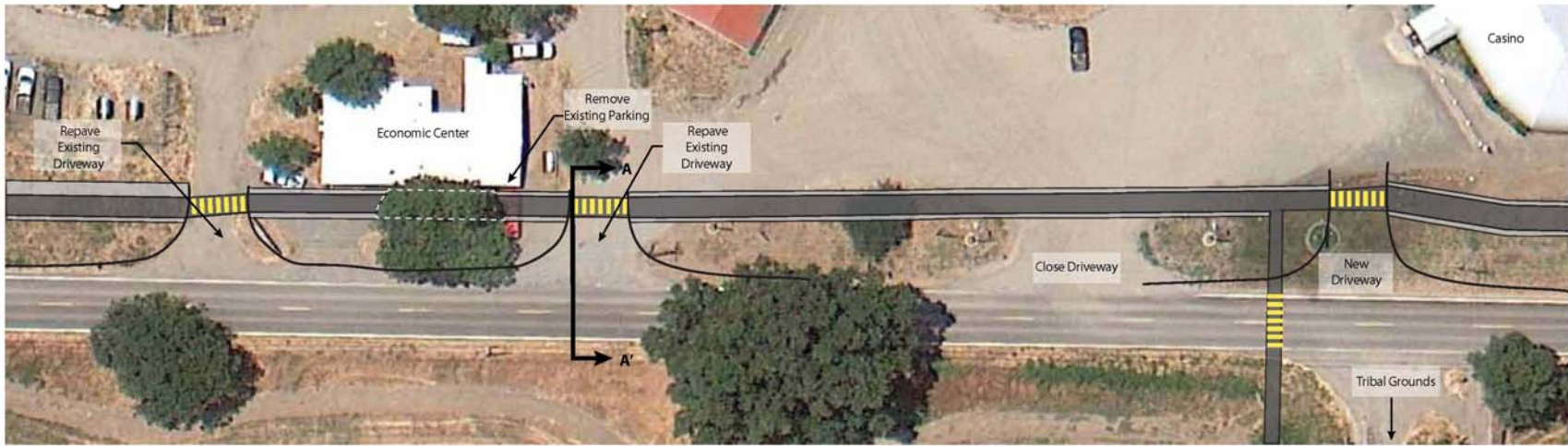


Figure 5-10: SR 162 – Trail at Tribal Economic Center

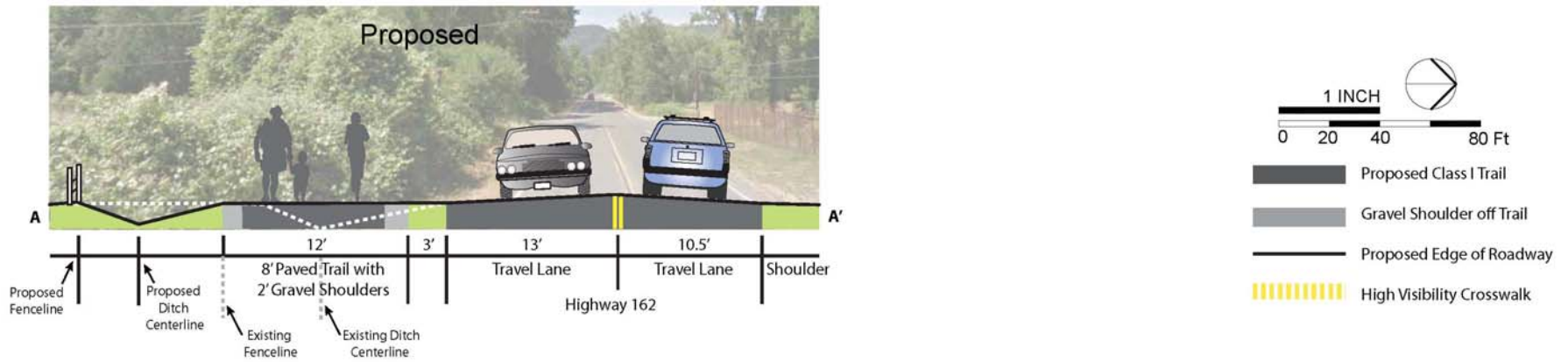


Figure 5-11: SR 162 – Trail at Biggar Lane

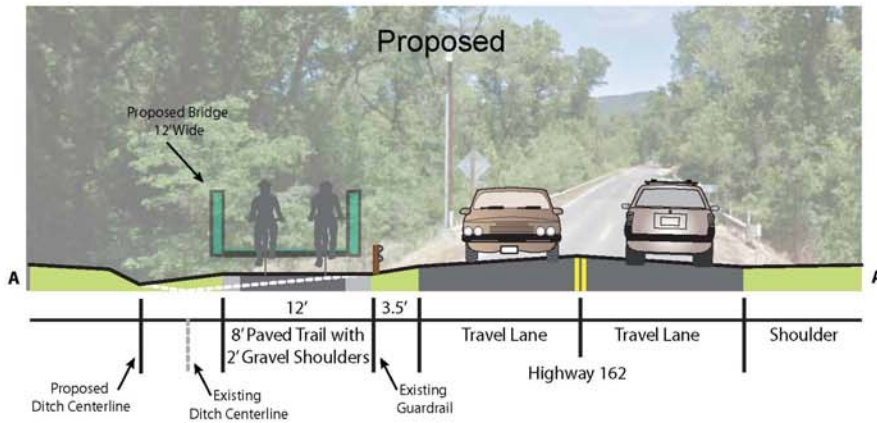
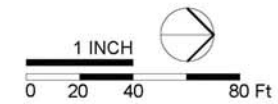
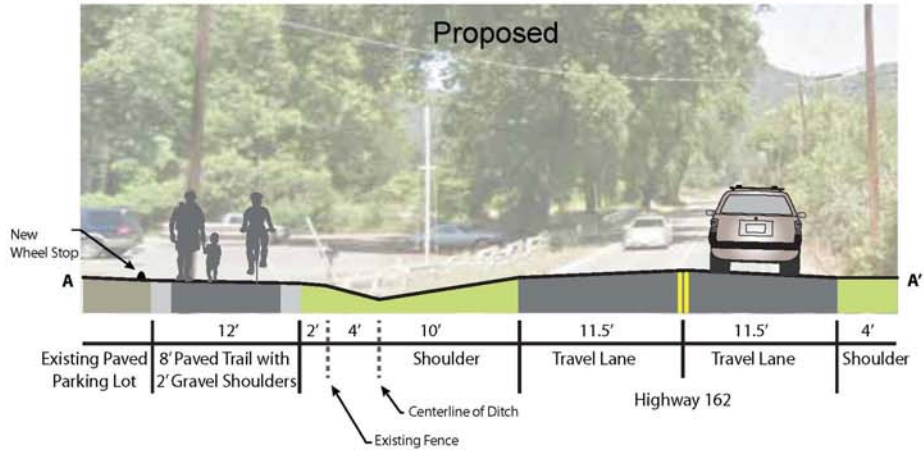


Figure 5-12: SR 162 – Trail Bridge



-  Proposed Class I Trail
-  Gravel Shoulder off Trail
-  Trail under Tree Canopy
-  Existing Mature Tree to Remain
-  Existing Driveways to Remain

Figure 5-13: SR 162 – Trail at Tribal Offices